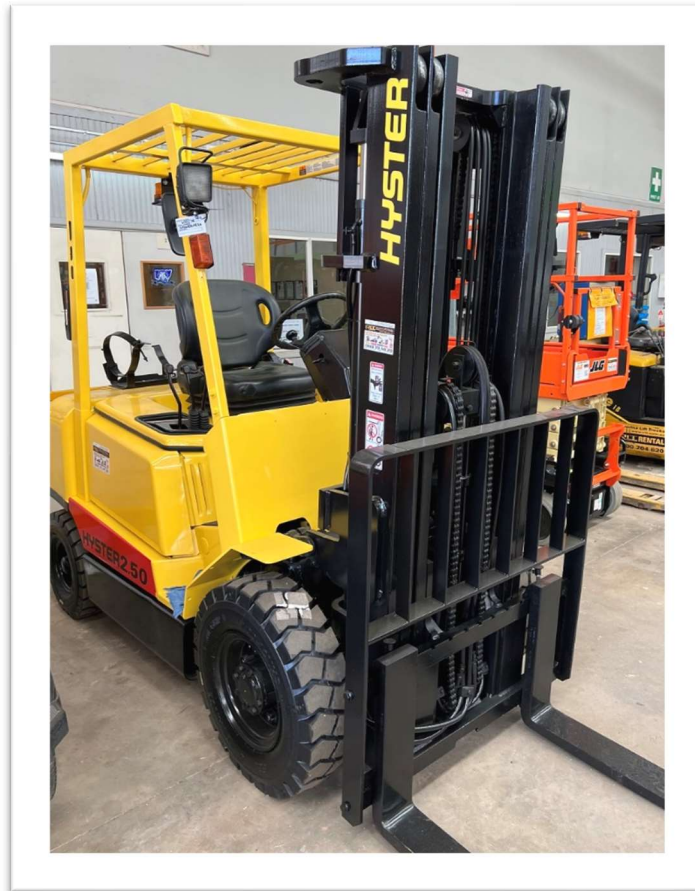




Riverina Lift Trucks
DEDICATED TO EXCELLENCE SINCE 1983

www.rlt.com.au



HYSTER H2.50DX Forklift

\$9,500 + GST

Make	Hyster	Fuel	LPG
Model	H2.50DX	Tyres	Solids (New)
Capacity	2,500 kg	Attachments	Side Shift
Year	2003	Extras	New Paint
Mast Stage	3 Stage	Hours	10,506
Lift Height	4,500 mm	Transmission	Monotrol
Location	Griffith NSW	Phone	1300 704 620
STOCK ID	600274	Serial Number	A466R06483A



42-46 Wakaden Street, Griffith NSW 2680, P: 02 6962 6255 | ABN 85 003 091 058

GRIFFITH | WAGGA WAGGA | BATHURST | SHEPPARTON